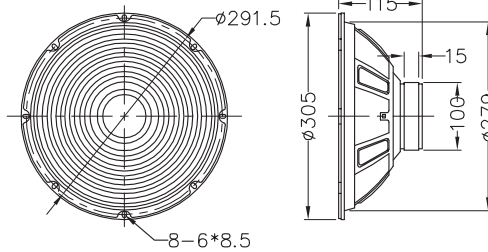
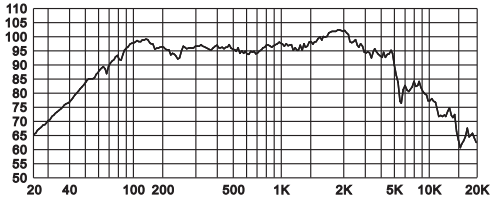
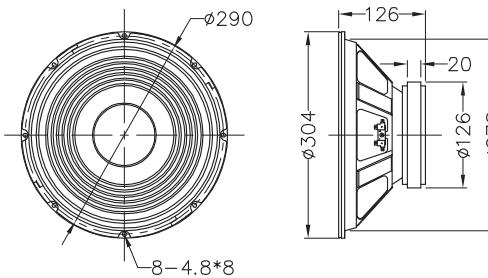
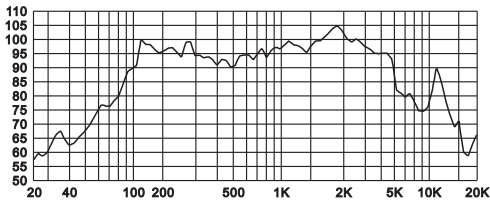


PROFESSIONAL GUITAR SPEAKER

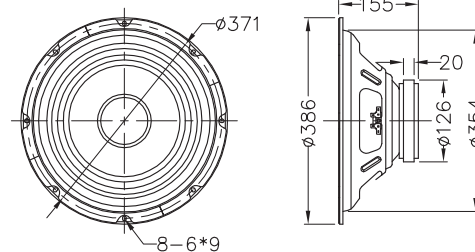
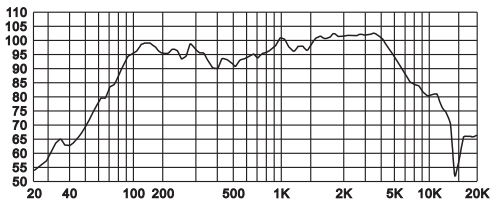
SP-1240GI



SP12-RKT50-4



JSP-15-4



MODEL	SP-1240GI	SP12-RKT50-4	JSP15-4
SPECIFICATION			
Nominal Diameter	305mm/12"	304mm/12"	386mm/15"
Impedance	4ohms	4ohms	4ohms
Frequency Range	Fs-5,500Hz	Fs-5,000Hz	Fs-8,000Hz
Max. Power	40W	160W	100W
Power Rating	25Wrms	80Wrms	50Wrms
Sensitivity(SPL)	96dB(1W/1M)	95dB(1W/1M)	96dB(1W/1M)
MATERIALS			
Basket	Steel	Steel	Steel
Cone	Paper	Paper	Paper
Surround	Paper	Paper	Paper
Voice Coil	φ25mm / ASV	φ38mm / KSV	φ38mm / KSV
Magnet	Ferrite / φ100mm / 16Oz	Ferrite / φ126mm / 34Oz	Ferrite / φ126mm / 34Oz
THIELE-SMALL PARAMETERS			
Free Air Resonance(Fs)	90Hz	105Hz	103Hz
Suspension Compliance(Cms)	0.11mm/N	0.72mm/N	0.47mm/N
Moving Mass(Mms)	28.07g	32.3g	50.9g
Mechanical Q Factor(Qms)	4.76	2.6	3.56
Electrical Q Factor(Qes)	1.21	1.4	1.91
Total Q Factor(Qts)	0.97	0.92	1.2
Equivalent Volume(Vas)	46.06	23.5	48.5
RDC DC Resistance(Re)	3.2ohms	3.6ohms	3.6hms
Effective Cone Area(Sd)	539.1cm ²	510.4cm ²	855.3cm ²
Force Factor(BL)	6.45Tm	7.3Tm	7.9Tm
Reference Efficiency(ηo)	2.62%	2.0%	2.7%
PACKING			
	4PCS/CTN: CARTON:560*340*290mm (0.056 M/CTN)	4PCS/CTN: CARTON:570*340*310mm (0.060 M/CTN)	4PCS/CTN: CARTON:685*415*350mm (0.099 M/CTN)